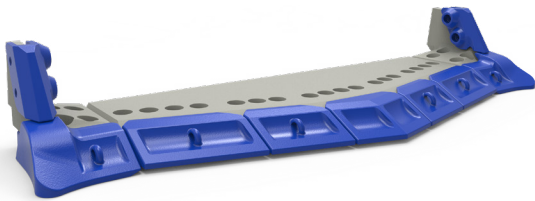


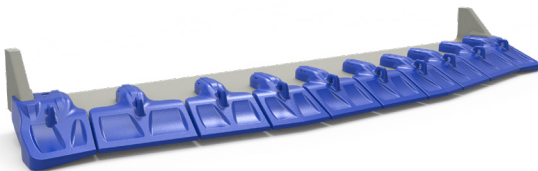
# LHD LIP SYSTEMS

Reduce total cost of ownership. Increase productivity.

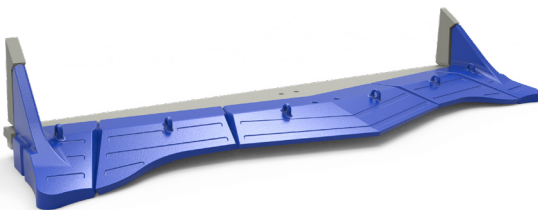
## **WEARPACT™**



## **SNRG™**



## **ARMOURBLADE™**



CR Mining's world-class GET technology enables our partners to reduce the total cost of ownership and improve productivity across their entire underground fleet.

- Reduce total cost of ownership
- Increase reliability and machine availability
- Longer wear life
- Improve productivity

Wearpack is a safe, high quality, bolt-on GET system that is proven to deliver exceptional reliability, cost of ownership, and productivity results on mine sites around the world.

## FEATURES

### Protect your bucket

Reduces maintenance and downtime. Improves loader availability and reliability.

### Superior material

Hard-wearing, impact-resistant steel improves life and reduces downtime costs.

### Low profile

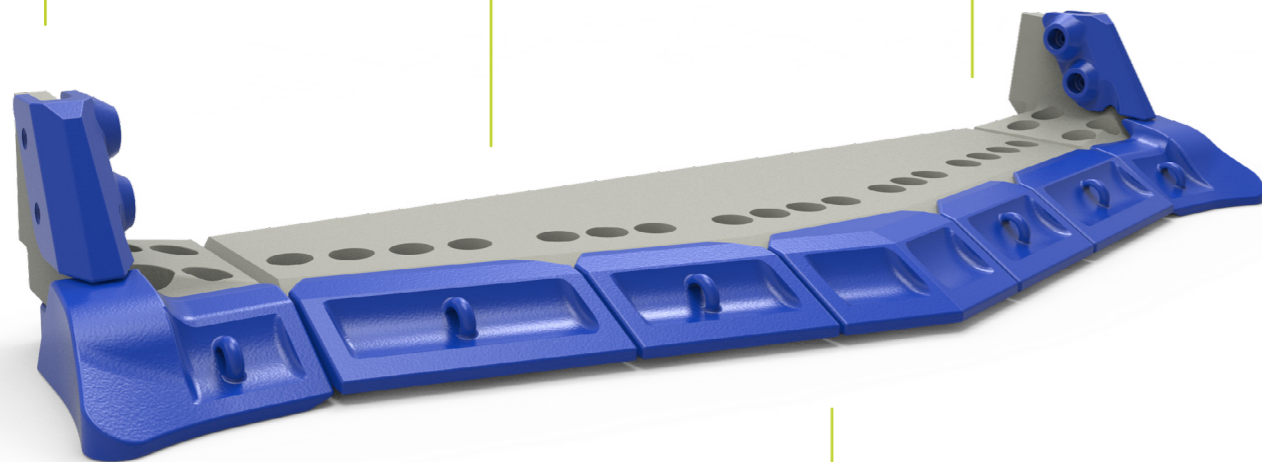
Low profile design makes your machines work easier, reduces waste, and improves productivity. Modeling of material flow ensures less wastage of GET.

### Consistent wear

Designed to wear from the bottom up – so the more it wears, the sharper it gets. Consistent wear across edge. Patented Wedge Retainer system ensures better GET attachment given multiple fastening points. Solid wrap style corners for long life.

### Easy-to-use locking system

Patented Wedge retainer system that is reliable and easy to install and remove. Wherever and whenever you change your GET, rest assured it can be done safely and easily.



**Reduce Total Cost of Ownership**



**Increase Wear Life**

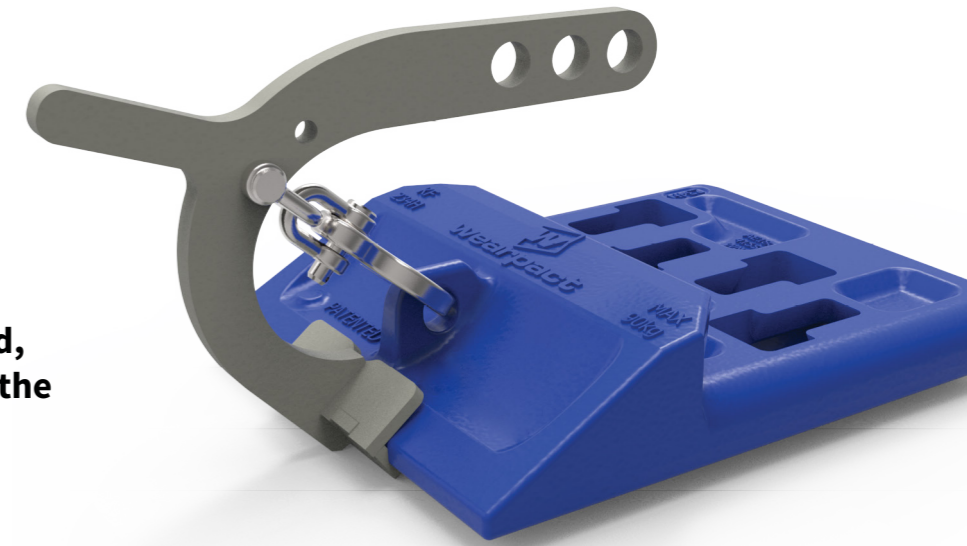


**Increase Reliability**



**Increase Safety**

The innovative design ensures maximum performance and wear life, with the system designed so that individual edge segments can be safely replaced as needed, eliminating the need to replace the entire blade system in one go.



The hard working left and right corners can be changed independently from the rest of the edge system. With a variety of corner replacement edges to choose from including standard, intermediate and heavy-duty, the entire edge system life is maximized by this unique design.

### Safety first: lower likelihood of injury

The wedge nut is housed within each edge segment. Operators aren't at risk of injury when replacing the edge as there's no need to work underneath the bucket.

### Wedge nut locator

An easy to use optional accessory, the wedge nut locator allows for easy alignment during the assembly process and is simply ejected and reused.

### Lifting device

The specially designed lifting device holds the edges level and enables easy fitting to the lip plate.

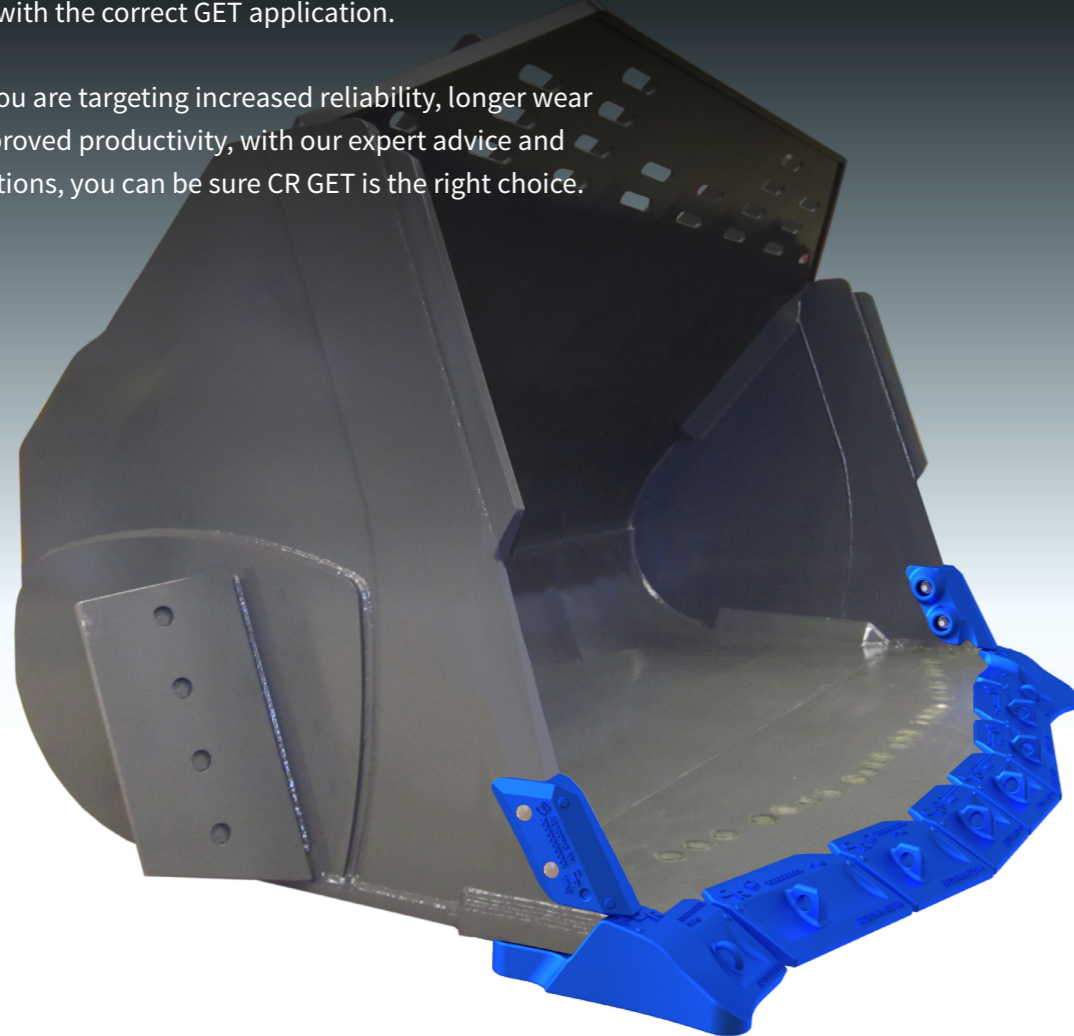
### Wear indicators

With dedicated wear indicators, it's easier to see when teeth have worn to their limit, offering guidance on time before change out.

## The Most Advanced Productivity Solutions

CR designs simplify the maintenance process, reduce the demand on maintenance teams, and improve digging efficiency with the correct GET application.

Whether you are targeting increased reliability, longer wear life, or improved productivity, with our expert advice and service options, you can be sure CR GET is the right choice.



## Lip Attachments

(ADD LH or RH to product code for side reference)  
\*Also Available In KS Grade Material For Extreme Conditions

END BLADES/CORNER SHROUDS			
Product Code	Part Description	Weight (KG)	Weight (LBS)
AE180EB-WN	STANDARD END BLADE (LH & RH)*	80kg	176lbs
AE180EB2-WN	HALF LIFE END BLADE (LH & RH)*	69kg	152lbs
AE180EBF	HD 70mm FLARED END BLADE (LH & RH)*	87kg	192lbs
AE180EBF-55	55mm FLARED END BLADE (LH & RH)*	74kg	163lbs
AE180WT	SHROUDED END BLADE (LH & RH)*	84kg	185lbs

## Lip Attachments (Continued)

CENTER BLADES/LIP SHROUDS			
Product Code	Part Description	Weight (KG)	Weight (LBS)
AE180WN-430	STANDARD 430mm BLADES (LH & RH)*	84kg	185lbs
AE180HD-430	HD 70mm 430mm BLADES (LH & RH)*	109kg	240lbs
AE180WN-325	STANDARD 325mm BLADES (LH & RH)*	65kg	143lbs
AE180HD-325	HD 70mm 325mm BLADES (LH & RH)*	81kg	179lbs
AE18010-325	STANDARD 10° SPADE 325mm ANGLE BLADE (LH & RH)*	65kg	143lbs
AE18010-430	STANDARD 10° SPADE 430mm ANGLE BLADE (LH & RH)*	89kg	196lbs

(ADD LH or RH to product code for side reference)  
\*Also Available In KS Grade Material For Extreme Conditions

STRAIGHT BLADES/LIP SHROUDS			
Product Code	Part Description	Weight (KG)	Weight (LBS)
AE180WN-325 S	STANDARD STRAIGHT 325mm BLADE*	64kg	141lbs
AE180WN-415 S	STANDARD STRAIGHT 415mm BLADE*	78kg	172lbs
AE180HD-325 S	HD 70mm STRAIGHT 325mm BLADE*	79kg	174lbs
AE180HD-415 S	HD 70mm STRAIGHT 415mm BLADE*	101kg	223lbs

\*Also Available In KS Grade Material For Extreme Conditions

CAST CORNER LIP ENDS			
Product Code	Part Description	Weight (KG)	Weight (LBS)
AE181LE	STANDARD LIP END	74kg	163lbs
AE182LE	HEAVY DUTY LIP END (NEW)*	76kg	167lbs
AE183LE	SUPER DUTY LIP END-60mm (NEW)*	88kg	194lbs

(ADD LH or RH to product code for side reference)  
\*Refer Fasteners/Locking System details below

WING SHROUDS FOR ALL CAST CORNERS			
Product Code	Part Description	Weight (KG)	Weight (LBS)
AE180WSBA	WEAR SHROUD WITH FASTENER/LOCK ASSEMBLY	17kg	37lbs

(ADD LH or RH to product code for side reference)

FASTENERS/LOCKING SYSTEMS			
Product Code	Part Description	Weight (KG)	Weight (LBS)
KWNA114-60	HEX BOLT & WASHER KIT	1.3kg	2.9lbs
KSHCSWNA114-75	SHCS BOLT + WASHER KIT (AE182 & AE183 LIP ENDS)	1.4kg	3.1lbs
KWNA30-55HEX	HEX BOLT & WASHER KIT FOR AE180EBF-55	1kg	2.2lbs



## Designed to Reduce Total Cost of Ownership

The CR underground GET range is designed specifically to deliver reliability and reduce the total cost of ownership of underground mining equipment. Our dedicated team of product experts is committed to delivering a product that meets your mining requirements.



**CR Mining is on a mission to revolutionize mining productivity.**

We engineer the most advanced surface and underground mining solutions for the world's best miners to unlock productivity, enhance safety, and reduce maintenance requirements.

**Start the conversation**



(+61) 1800 987 525



GlobalSales@CRmining.com



(+1) 866 276 4637



CRmining.com