

UNDERGROUND G.E.T.



Reduce total cost of ownership.
Increase productivity.

CR Mining's world-class G.E.T. technology enables our partners to reduce the total cost of ownership and improve productivity across their entire underground fleet.

- Reduce total cost of ownership
- Increase reliability and machine availability
- Longer wear life
- Improve productivity

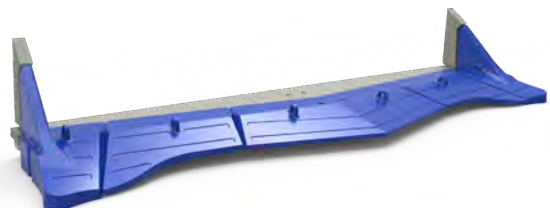
WEARPACT™



SNRG™



ARMOURBLADE™



WEARPACT™ is a safe, high quality, bolt-on G.E.T. system that is proven to deliver exceptional reliability, cost of ownership and productivity results on mine sites around the world.

FEATURES

Protect your bucket

Reduces maintenance and downtime. Improves loader availability and reliability.

Superior material

Hard wearing impact resistant steel improves life and reduces downtime costs.

Low profile

Low profile design make your machines work easier, reduce waste and improve productivity. Modelling of material flow ensures less wastage of G.E.T.

Consistent wear

Designed to wear from the bottom up – so the more it wears, the sharper it gets. Consistent wear across edge. Patented Wedge Retainer system ensures better G.E.T. attachment given multiple fastening points. Solid wrap style corners for long life.

Easy-to-use locking system

Patented Wedge retainer system that is reliable and easy to install and remove. Wherever and whenever you change your GET rest assured it can be done safely and easily.



Reduce Total Cost of Ownership



Increase Wear Life



Increase Reliability



Increase Safety

The innovative design ensures maximum performance and wear life, with the system designed so that individual edge segments can be safely replaced as needed, eliminating the need to replace the entire blade system in one go.

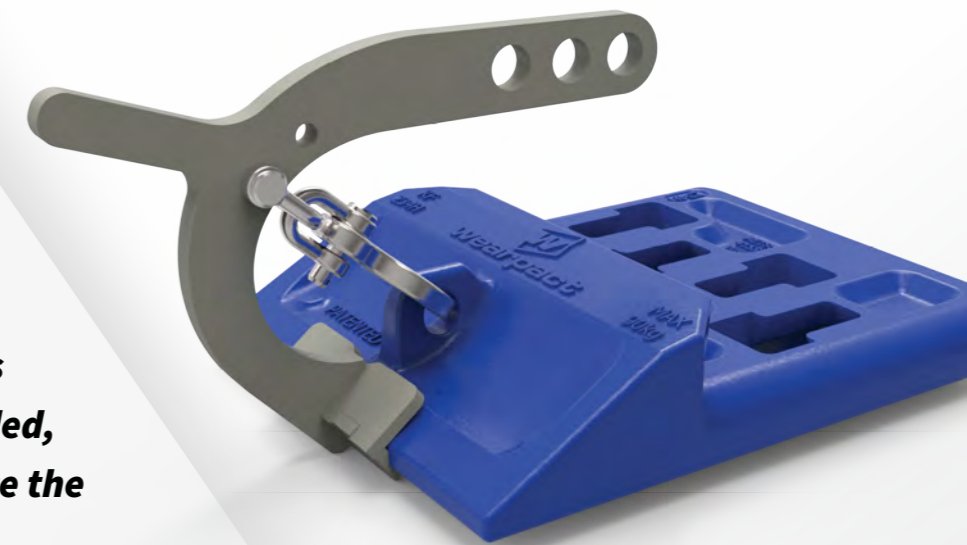
The hard working left and right corners can be changed independently from the rest of the edge system. With a variety of corner replacement edges to choose from including standard, intermediate and heavy-duty, the entire edge system life is maximized by this unique design.

Safety first: lower likelihood of injury

The wedge nut is housed within each edge segment. Operators aren't at risk of injury when replacing the edge as there's no need to work underneath the bucket.

Lifting device

The specially designed lifting device holds the edges level and enables easy fitting to the lip plate.



Wedge nut locator

An easy to use optional accessory, the wedge nut locator allows for easy alignment during the assembly process and is simply ejected and reused.

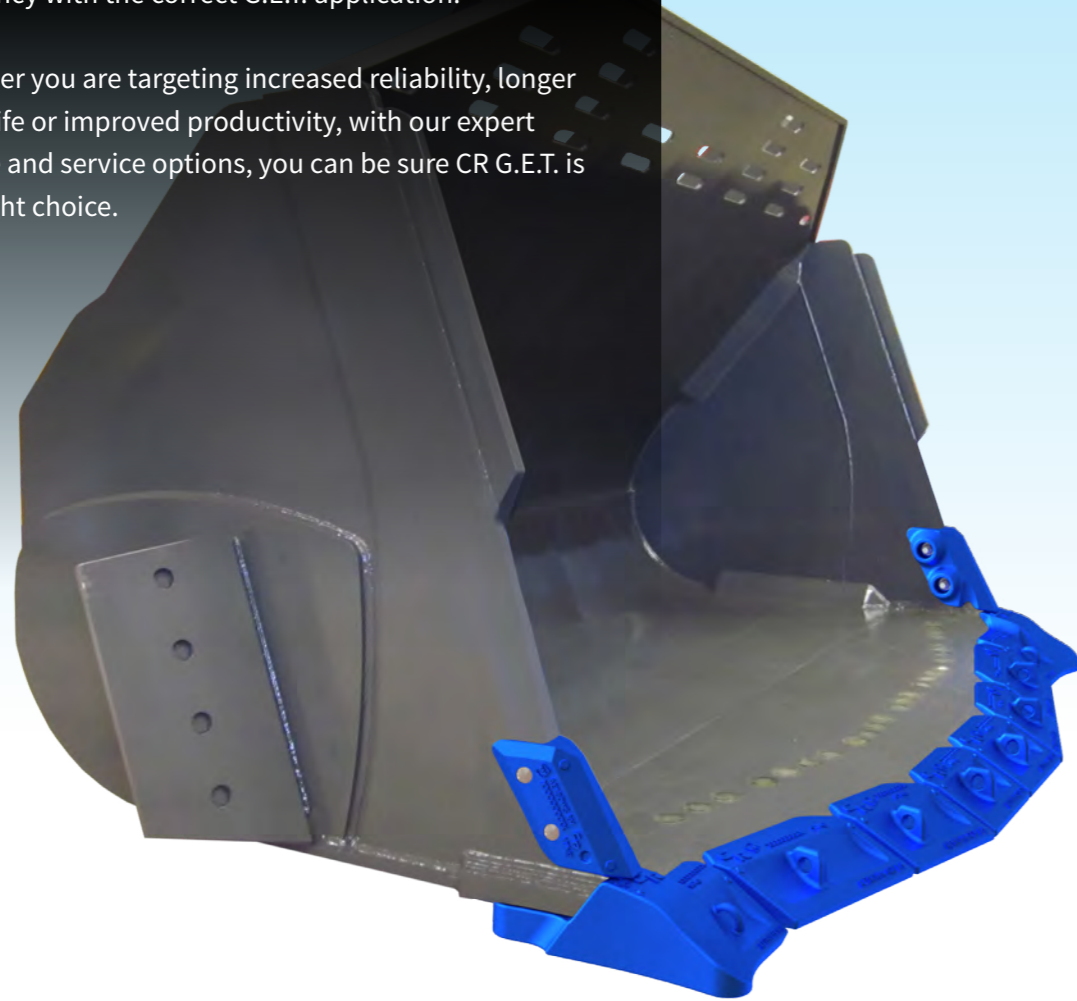
Wear Indicators

With dedicated wear indicators, it's easier to see when teeth have worn to their limit, offering guidance on time before change out.

The most advanced productivity solutions

CR designs simplify the maintenance process, reduce the demand on maintenance teams and improve digging efficiency with the correct G.E.T. application.

Whether you are targeting increased reliability, longer wear life or improved productivity, with our expert advice and service options, you can be sure CR G.E.T. is the right choice.



Lip Attachments

(ADD LH or RH to product code for side reference)
*Also Available In KS Grade Material For Extreme Conditions

END BLADES/CORNER SHROUDS

Product Code	Part Description	Weight (KG)	Weight (LBS)
AE180EB-WN	STANDARD END BLADE (LH & RH)*	80kg	176lbs
AE180EB2-WN	HALF LIFE END BLADE (LH & RH)*	69kg	152lbs
AE180EBF	HD 70mm FLARED END BLADE (LH & RH)*	87kg	192lbs
AE180EBF-55	55mm FLARED END BLADE (LH & RH)*	74kg	163lbs
AE180WT	SHROUDED END BLADE (LH & RH)*	84kg	185lbs

Lip Attachments (Continued)

CENTRE BLADES/LIP SHROUDS

Product Code	Part Description	Weight (KG)	Weight (LBS)
AE180WN-430	STANDARD 430mm BLADES (LH & RH)*	84kg	185lbs
AE180HD-430	HD 70mm 430mm BLADES (LH & RH)*	109kg	240lbs
AE180WN-325	STANDARD 325mm BLADES (LH & RH)*	65kg	143lbs
AE180HD-325	HD 70mm 325mm BLADES (LH & RH)*	81kg	179lbs
AE18010-325	STANDARD 10° SPADE 325mm ANGLE BLADE (LH & RH)*	65kg	143lbs
AE18010-430	STANDARD 10° SPADE 430mm ANGLE BLADE (LH & RH)*	89kg	196lbs

(ADD LH or RH to product code for side reference)
*Also Available In KS Grade Material For Extreme Conditions

STRAIGHT BLADES/LIP SHROUDS

Product Code	Part Description	Weight (KG)	Weight (LBS)
AE180WN-325 S	STANDARD STRAIGHT 325mm BLADE*	64kg	141lbs
AE180WN-415 S	STANDARD STRAIGHT 415mm BLADE*	78kg	172lbs
AE180HD-325 S	HD 70mm STRAIGHT 325mm BLADE*	79kg	174lbs
AE180HD-415 S	HD 70mm STRAIGHT 415mm BLADE*	101kg	223lbs

*Also Available In KS Grade Material For Extreme Conditions

CAST CORNER LIP ENDS

Product Code	Part Description	Weight (KG)	Weight (LBS)
AE181LE	STANDARD LIP END	74kg	163lbs
AE182LE	HEAVY DUTY LIP END (NEW)*	76kg	167lbs
AE183LE	SUPER DUTY LIP END-60mm (NEW)*	88kg	194lbs

(ADD LH or RH to product code for side reference)
*Refer Fasteners/Locking System details below

WING SHROUDS FOR ALL CAST CORNERS

Product Code	Part Description	Weight (KG)	Weight (LBS)
AE180WSBA	WEAR SHROUD WITH FASTENER/LOCK ASSEMBLY	17kg	37lbs

(ADD LH or RH to product code for side reference)

FASTENERS/LOCKING SYSTEMS

Product Code	Part Description	Weight (KG)	Weight (LBS)
KWNA114-60	HEX BOLT & WASHER KIT	1.3kg	2.9lbs
KSHCSWNA114-75	SHCS BOLT + WASHER KIT (AE182 & AE183 LIP ENDS)	1.4kg	3.1lbs
KWNA30-55HEX	HEX BOLT & WASHER KIT FOR AE180EBF-55	1kg	2.2lbs

PRODUCTIVITY TECHNOLOGY



Designed to reduce total cost of ownership.

The CR underground G.E.T range is designed specifically to deliver reliability and reduce the total cost of ownership of underground mining equipment. Our dedicated team of product experts is committed to delivering a product that meets your mining requirements.



About CR

For over 40 years CR (formerly CQMS Razer) has been a world leader in designing and manufacturing innovative mining productivity technology for both surface and underground applications.

With a footprint in every major global mining region, CR produces a leading range of products that include excavator and wheel loader cast lip systems, ground engaging tools (G.E.T.), dragline buckets/rigging



and, in recent years, added critical mining data systems including load haul and drilling optimization technologies.

With an innovative design approach and a commitment to high-quality and reliable mining products, CR is a leader in engineering innovation and the manufacture of productivity-enhancing mining equipment and software.

UNDERGROUND G.E.T.

CONNECT WITH US    

Call your Account Manager today or visit CRmining.com/underground for more information

PART OF THE CR GROUP