

UNIVERSAL LIFTING SOLUTION



Increase productivity. Reduce maintenance.

The Universal Lifting Solution can lift all CR G.E.T. The simple, easy to use design provides a safe and consistent lifting solution that works without improvisation or additional tooling.

- Eliminates unreliable slings and other improvised lifting devices
- Works with all G.E.T. regardless of size, condition, or manufacturer
- Rated load limit of 750kg (1,653lbs) to lift all CR G.E.T.
- Compact and easy to use - no additional tooling required

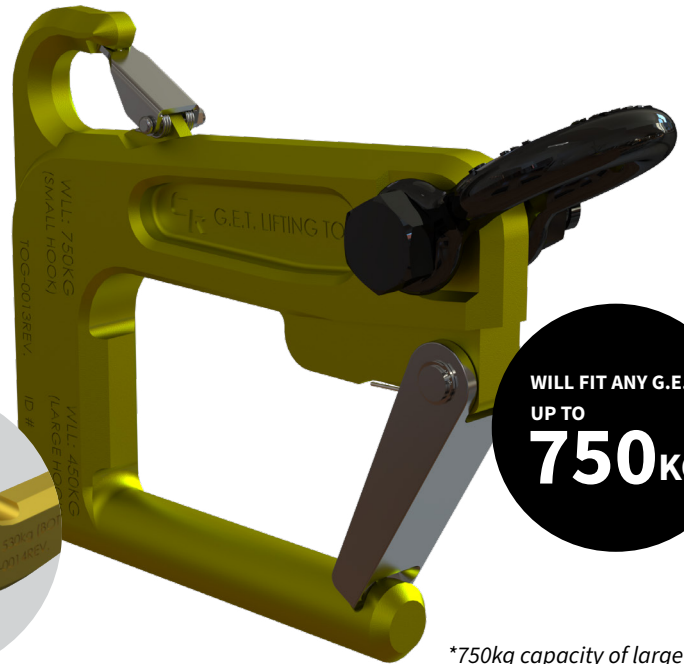
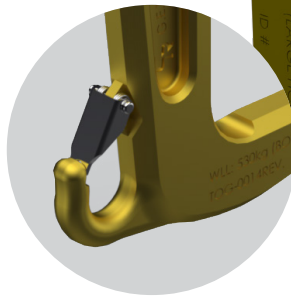
THE PROVEN SOLUTION

Key Features and Benefits

Safety is at Our Core.

With a core value of Zero Harm, CR is dedicated to preventing injuries and incidents. G.E.T. can be heavy and awkward to handle, especially when worn. Studies have shown up to 32% of injuries in surface mining are caused by strenuous movements. By eliminating unreliable slings and other improvised lifting devices, the universal lifting solution prevents flings and drops, reducing safety hazards and keeping our customers safe.

UP TO
32%
of injuries in surface
mining occur
due to strenuous
movements.



WILL FIT ANY G.E.T.
UP TO
750KG

**750kg capacity of large hook.
Small hook capacity of 530kg.*

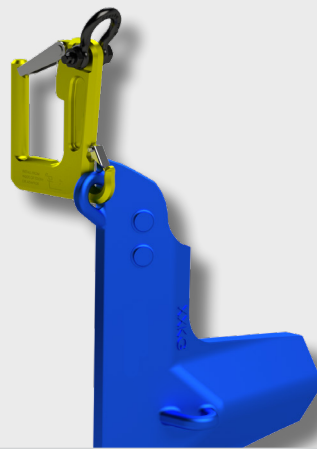
Thoroughly Universal.

Our universal lifting tool can lift any G.E.T., from teeth to shrouds and everything in between. Regardless of size, manufacturer, or condition, it's ready for the task at hand.



Strong and Powerful.

The universal lifting hook makes moving heavy G.E.T. a breeze. Multiple hook sizes can handle any application, and with a load limit of 750kg (1,653lbs) no component is out of reach.






A Safety Solution for All.

We know that not every mine site has access to additional safety equipment. The universal lifting solution is a compact safety device that works with any D-shackle configuration with no tooling required.



**UNIVERSAL LIFTING
SOLUTION**

CONNECT WITH US    

Call your account manager today or visit
CRmining.com for more information.

PART OF THE CR GROUP.